

DESKTOP TOOLS

FOR

Volleyball
ACE

INCLUDING

STRATEGIC ANALYZER

STATEDITOR

DATA ENTRY WORKSHEET



© COPYRIGHT 2000-2013
DIMENSIONAL SOFTWARE
ALL RIGHTS RESERVED

Notice

While every attempt has been made to ensure the accuracy and completeness of the information in this manual, some typographical or technical errors may exist. Dimensional Software cannot accept responsibility for customer's losses resulting from the use of this manual.

The information contained in this manual is subject to change without notice. Any improvements or changes to either the product or the manual will be documented in subsequent editions. This manual contains proprietary information which is protected by copyright. All rights are reserved. No part of this manual may be photocopied, reproduced, or translated to another language without prior written consent of Dimensional Software.

Volleyball Ace, Volleyball Ace Analyzer, the Volleyball Ace symbol and logos, SnapCharts and Dimensional Software are trademarks of Dimensional Software. Macintosh, iPad, iPhone, iPod, Macintosh and iTunes are trademarks of Apple Computer. Android and Google are trademarks of Google. DakStats 3000 is a trademark of Daktronics. MaxPreps is a trademark of CBS.

Version 8.60

Publication Date: February, 2013

© Copyright 2000-2013 Dimensional Software

If you have any questions about this manual or Volleyball Ace, contact:

Dimensional Software

P.O. Box 1103

Los Altos, California 94023-1103

U.S.A.

(408) 617-0083 FAX (650) 948-2616

web: www.ace4vb.com

email: Coach@ace4vb.com

Table of Contents

Chapter	Page
Table of Contents	3
About this Guide	6
1 Introduction	7
2 Strategic Analyzer	9
Running Strategic Analyzer - WinPC	10
Running the Strategic Analyzer - Mac	10
Browsing to Match Data	11
Selecting Sets to Include in Stats	12
Strategic Analyzer Reports	13
Formatted Box Score	13
Player Summary	14
Points per Rotation	15
Points per Rotation Options	15
Serve and Pass Ratings	17
Forced versus Unforced Errors	18
Creates and Converts - Digs and Freeballs	18
Match Scores	19
Per Set Averages	19
Total Attempts	20
Opponent Statistics	20
Row and Page Options	21
Sort Order	21
3 Output Options	22
4 Custom Reports	24

Table of Contents (continued)

Chapter		Page
5	Stat Export Features	27
	Exporting Stats to MaxPreps	28
	Exporting Stats to DakStats 3000	29
6	Player Renumbering	34
7	StatEditor	36
	Select a Set to Edit	38
	Main StatEditor Screen	38
	Edit Rallies	40
	Edit Other Events	43
	Player Number Adjustment Utility	45
	Save Changes	47
8	Data Entry Worksheet	49
	Index	51

Volleyball Ace Desktop

About this Guide

This guide describes the Volleyball Ace Desktop Tools, which are a companion to Volleyball Ace. These tools provide desktop functionality to edit stats, manually enter stats and do enhanced stat reporting.

Chapter 1 is an introduction to the Volleyball Ace Desktop Tools.

Chapter 2 describes the Volleyball Ace Strategic Analyzer.

Chapter 3 shows the output options of the Strategic Analyzer.

Chapter 4 illustrates how to set up a Strategic Analyzer custom report.

Chapter 5 details exports to MaxPreps and DakStats3000.

Chapter 6 describes player renumbering with the Strategic Analyzer.

Chapter 7 documents the StatEditor application.

Chapter 8 describes the Data Entry Worksheet Excel add-in.

Chapter 1

Introduction

Volleyball stats which been recorded using Volleyball Ace on Apple and Android phones and tablets can be uploaded to a Windows PCs and Macintosh computers for consolidation, analysis, printed reports, export to other tools and output to data files (including web-ready files).

In addition to extended reporting capabilities, the Volleyball Ace Desktop Tools include utilities for editing stats (StatEditor), manually entering stats (Data Entry Worksheet) and player renumbering (included in Strategic Analyzer and StatEditor).

The TeamBuilder application is no longer available, as its capabilities have been replaced by functionality within the Volleyball Ace application itself.

This guide assumes that data has been uploaded to the Windows PC Desktop or the Macintosh Desktop. Instructions on uploading data are included in the Volleyball Ace User Guide, a companion document.

Volleyball Ace Desktop

MVHS05 vs Sequoia (3 games)

Report Type:
Box Score

Rows:
Players

Pages:
<none>

☒ Service Passes Only
☐ Suppress Zeroes

☐ Print Set List
☐ Gridlines
☒ All Pages

☒ Hide If No Stats

Sort Order
<none>

Up Down

Row Width: 25

Adi rotation for 1st serve

	Ga- mes	Attk Kills	Attk Err	Attk TA	Attack Pct.	Set Asst	Srve Ace	Srve Err	Serve Att	Rec Err	Rec Att	Def Dig	Blk Solo	Blk Assts	Blk Err	Gen BHE	Pts
1 Abby	3	2	1	6	.167	31	2	2	12			5					4.0
2 Summer	3	6		12	.500							3	1				7.0
3 Chelsea	3	12	2	21	.476		2	1	11		12	9	1			1	15.0
4 Jessica	1		1	2	-.499				2		1	2					
5 Laura	1	1		3	.333	2			1							4	1.0
6 Christie	1					1			1			1					
7 Monica	3					2			8			6					
8 Lauren	1	3		4	.750	1						2				1	3.0
9 Biz	3	5	4	23	.043		10		23		10	5			1		15.0
10 Elizabeth	3	1		1	1.000		1	1	8			1					2.0
11 Ali	3	1	1	8		1					18	22					1.0
12 Kelsey	3	4	1	9	.333	1				1	1	1	1	1		1	5.5
13 Marilee	1										2						
MVHS05	3	40	13	102	.265	39	17	5	73	1	46	58	4	2	1	7	62.0

Attacks by Set	K	E	TA	Pct.
Set 1	11	6	38	.131
2	14	3	25	.440
3	15	4	39	.282

Set Scores:	1	2	3	4	5
MVHS05	25	25	25		
Sequoia	15	13	20		

Total Team Blocks: 5

Exit Charts Reselect Data Print Setup Print Output Other Team-> Customize

Chapter 2

Strategic Analyzer

The most important of the desktop tools is the Volleyball Ace Strategic Analyzer. This desktop application provides many more types of reports than are available on the iPad/iPhone and Android platforms. It even provides for customization of reports.

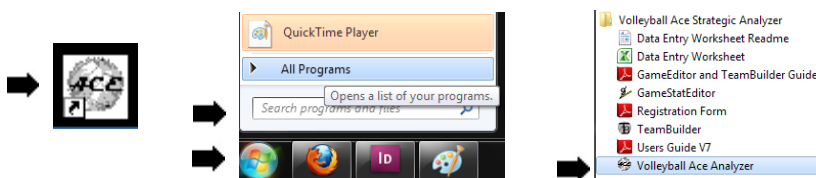
In addition to reporting, the Strategic Analyzer also provides options for exporting stat data to MaxPreps and DakStats 3000 tools, eliminating the need for extra data entry.

This chapter will cover basic data selection and reporting within the Analyzer. The following chapters will cover customizing reports, data output, data export and player renumbering. Additional chapters will cover the StatEditor application and use of the Data Entry Worksheet.

Volleyball Ace Desktop

Running the Strategic Analyzer - Windows PC Desktop

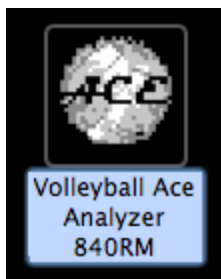
Once the data is on the desktop PC, run the Desktop Analyzer by double-clicking on the **Volleyball Ace icon**. If the icon is not visible on the desktop, click on the **Start button**, put the mouse cursor over the All Programs entry and click on the Volleyball Ace Strategic Analyzer folder. Run the Analyzer by clicking on the Volleyball Ace Strategic Analyzer:



Select one or more sets using the first screen in the Analyzer.

Running the Strategic Analyzer - Macintosh Desktop

Once the data has been copied to your Mac using iTunes, run the Desktop Analyzer by clicking on the **Volleyball Ace Analyzer icon**. If the Analyzer is not visible, then go to the Applications folder and double-click on the **Volleyball Ace Analyzer icon** there:



Select one or more sets using the first screen in the Analyzer.

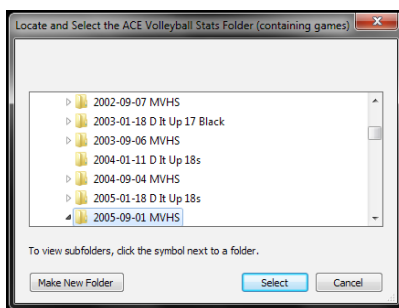
Browsing to Match Data

If no sets appear in the **Select Sets listbox** you may need to select a different drive or directory in the Analyzer.



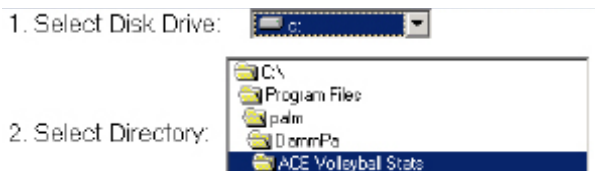
The data transferred to the desktop will be located in the folder where you saved it on the desktop in iTunes (Apple) or via the Windows Explorer (WinPC-Android) or the Android File Transfer utility (Macintosh-Android).

To access the saved set data, click on the Browse button and navigate to the appropriate folder:



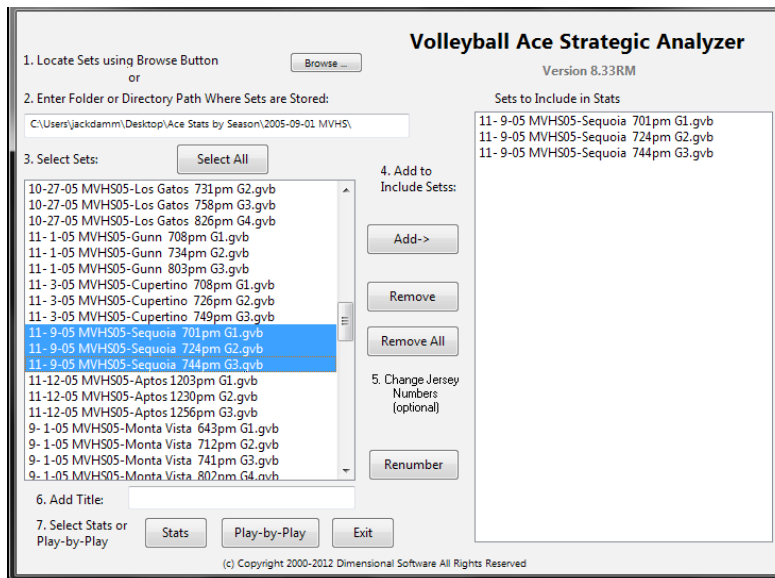
Volleyball Ace Desktop

Some versions of the Analyzer have a **Disk Drive drop-down** and **Directory list** instead of a **Browse button**. Again, navigate to the appropriate folder:



Selecting Sets to Include in Stats

Select sets to be included in stats using the first screen of the Volleyball Ace Analyzer. Select sets then click on the **Add button** to add them to the box on the right-hand side.



Note that multiple sets can be selected using shift-click to select a range of sets or control-click to select several sets at once. Click on the **Stats button** to see statistics.

Strategic Analyzer Reports

The Desktop Analyzer creates more reports than are available on the handheld, including fully formatted box scores, individual player stats, per set average stats, total attempts, earned versus unearned points, first ball stats and a summary of set and match scores.

Formatted Box Score

Volleyball Ace box scores generated by the Analyzer show all the information required on collegiate box scores, including hitting stats per set and set scores.

MVH505 vs Sequoia (3 games)

Report Type: **Box Score** Rows: **<none>** Pages: **<none>** ☒ Service Passes Only ☒ Suppress Zeros ☐ Print Set List ☐ Gridlines ☒ All Pages ☒ Hide If No Stats Sort Order: **<none>** ☒ Up ☐ Down

Row Width: 25

	Ga- mes	Attk Kills	Attk Err	Attk TA	Attack Pct.	Set Asst	Srve Ace	Srve Err	Serve Rec Att	Rec Err	Def Att	Blk Dig	Blk Solo	Blk Assts	Gen Err	BHE	Pts
1 Abby	3	2	1	6	.167	31	2	2	12			5					4.0
2 Summer	3	6		12	.500							3	1				7.0
3 Chelsea	3	12	2	21	.476		2	1	11		12	9	1			1	15.0
4 Jessica	1		1	2	-.499				2		1	2					
5 Laura	1	1		3	.333	2			1						4		1.0
6 Christie	1					1			1								
7 Monica	3					2			8			6					
8 Lauren	1	3		4	.750	1						2				1	3.0
9 Biz	3	5	4	23	.043		10		23		10	5			1		15.0
10 Elizabeth	3	1		1	1.000		1	1	8			1					2.0
11 Ali	3	1	1	8		1					18	22					1.0
12 Kelsey	3	4	1	9	.333	1				1	1	1	1	1	1		5.5
13 Marilee	1										2						
MVH505	3	40	13	102	.265	39	17	5	73	1	46	58	4	2	1	7	62.0

Attacks by Set	K	E	TA	Pct.
Set 1	11	6	38	.131
2	14	3	25	.440
3	15	4	39	.282

Total Team Blocks: 5

Set Scores:	1	2	3	4	5
MVH505	25	25	25		
Sequoia	15	13	20		

Note: If sets from more than one match are selected, then the hitting per set and set scores are not listed in the on-screen report. Also note that checking the **Print Set List** checkbox causes a list of all sets, set scores and match totals to be printed. (A set list report can also be created on-screen using the Match Scores report).

Volleyball Ace Desktop

Player Summary

Player summary reports show stats for individual players all on the same page. Note the **PageDown** and **PageUp** buttons, which scroll through all players in the roster. Also note the **All Pages checkbox**, which affects whether all pages or only the current page is printed when the print option is selected.

3 Chelsea

MVHS05

Sets played: 108 of 109

Page 4

Report Type:
Player Summary

Rows:
Stat Type

Pages:
Players

☒ Service Passes Only
☐ Print Set List

☐ Suppress Zeroes
☐ Gridlines

☒ All Pages
☒ Hide If No Stats

Row Width: 25

PageDown

PageUp

Adj rotation for 1st serve

Attacks.....	Kills 460	Errors 124	Att. 1109	KillEff .303	Kills/Gm 4.26					
Serves.....	Aces 55	Errors 46	Att. 448	Ace % 12%	Aces/Gm .51	Svc Pts 221				
Assists.....	Assists 40	BHE 13	Sets 170	AsstEff .159	Asst/Gm .37					
Passes.....	Passes 433	Errors 29	Att. 462	Pass % 94%	Pass/Gm 4.01	Rated 0 35	1 35	2 47	3 106	Avg 2.00
Digs.....	Digs 443	Errors 43	Att. 486	Dig % 91%	Digs/Gm 4.10					
Blocks.....	Solo 11	Assist 15	Total 26	Errors 2	Block/Gm .24					

Exit

Charts

Reselect Data

Print Setup

Print

Output

Other Team->

Points per Rotation

The Points per Rotation report shows performance for both the coach team and the opponent. It also includes a sideout % stat for each team.

MVHS05 vs Saratoga (4 games)

Report Type: **PointsPerRotation** Rows: Rotations Pages: <none>

Row Width: 25

☒ Service Passes Only ☒ Suppress Zeroes
☐ Print Set List ☐ Gridlines ☒ All Pages
☒ PPR incl Side Out Pts ☒ Hide If No Stats

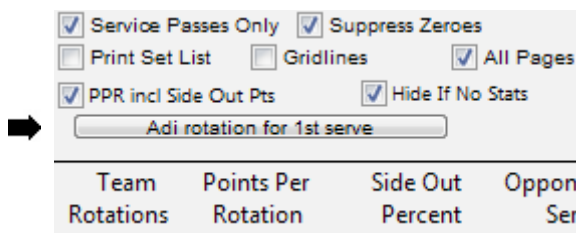
	Team Serves	Team Points	Team Rotations	Points Per Rotation	Side Out Percent	Opponent Serves	Opponent Points	Opponent Rotations	Opponent PPR	Net PPR	Opponent Side Out %
R1: 1	18	17	10	1.70	50%	18	19	10	1.90	-.20	50%
R2: 14	13	15	6	2.50	61%	13	11	8	1.37	1.13	61%
R3: 9	17	17	7	2.42	87%	8	8	7	1.14	1.28	87%
R4: 4 7	7	7	7	1.00	63%	11	11	7	1.57	-.57	63%
R5: 2	12	13	8	1.62	63%	11	10	7	1.42	.20	63%
R6: 3	28	28	10	2.80	83%	12	12	9	1.33	1.47	83%
Total	95	97	48	2.02	65%	73	71	48	1.47	.55	65%

Points per Rotation Options

When Points per Rotation is reported for more than one set, the rotations may need to be adjusted to account for different lineups when the team serves versus when the team is in serve receive.

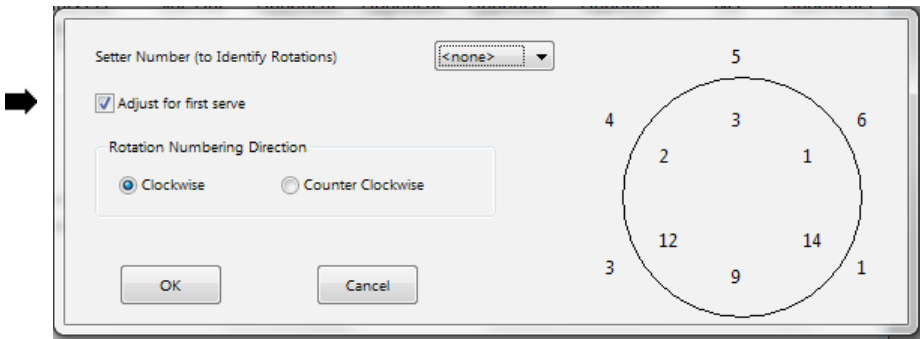
For teams which back-rotate their lineup when they are in serve receive, the rotation can be adjusted for first serve (see above). Alternately, the rotation can be centered on a specific player, typically the setter.

To specify how the rotations are to be adjusted, click on the **Adj Rotation button**:

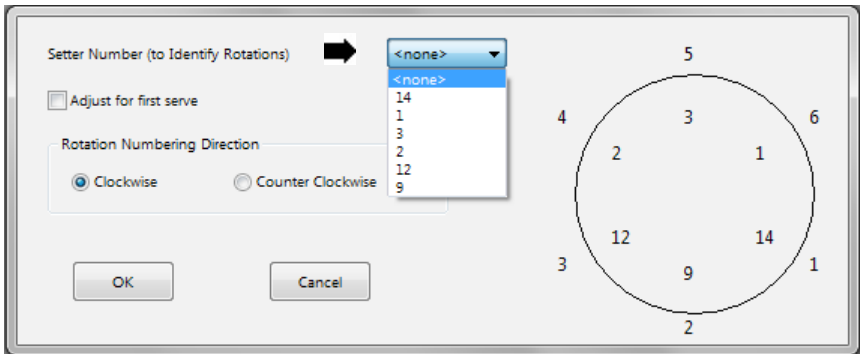


Volleyball Ace Desktop

Then select the rotation centering by checking the **Adj for first serve** checkbox:



Alternatively, adjust the rotation centering by selecting a player from the **Setter number drop-down list**:



The result when we center around the setter is:

MVHS05 vs Opponents (7 games)

Report Type: PointsPerRotation Rows: Rotations Pages: <none>

Row Width: 25

Service Passes Only Suppress Zeroes
Print Set List Gridlines All Pages
PPR incl Side Out Pts Hide If No Stats
Rotation relative to # 1

	Team Serves	Team Points	Team Rotations	Points Per Rotation	Side Out Percent	Opponent Serves	Opponent Points	Opponent Rotations	Opponent PPR	Net PPR	Opponent Side Out %
R1: 1	27	27	18	1.50	58%	31	31	18	1.72	-.22	58%
R2: 14	19	22	12	1.83	57%	26	23	15	1.53	.30	57%
R3: 9 8	31	30	16	1.87	66%	21	22	15	1.46	.41	66%
R4: 4 7	34	34	16	2.12	47%	34	34	17	2.00	.12	47%
R5: 2 10	29	29	16	1.81	69%	23	23	16	1.43	.38	69%
R6: 3	23	21	18	1.16	57%	28	30	17	1.76	-.60	57%
Total	163	163	96	1.69	58%	163	163	98	1.66	.03	58%

Serve and Pass Ratings

If sets are statted using the optional serve and pass ratings, these can be seen on the built-in rating reports.

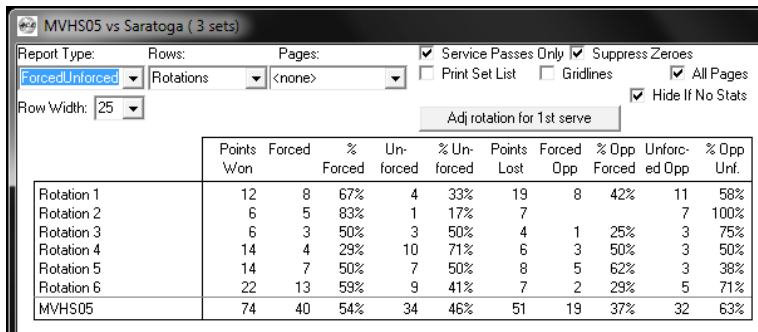
	Rated 0	Rated 1	Rated 2	Rated 3	Rated 4	Total Rated	Serve Avg
1 Annika			5		3	8	2.75
2 Susan							
3 Cathy	2		31		6	39	2.21
4 Candy	11		16	1	10	38	1.97
5 Rebecca			5		1	6	2.33
6 Sally	3		26	2	3	34	2.06
7 Samantha							
8 Petunia	5		11			16	1.38
11 Kaitlin							
12 Abby	3		26	1	4	34	2.09
13 Lucky	6		37		11	54	2.19
MOVHS 03	30		157	4	38	229	2.09

	Rated 0	Rated 1	Rated 2	Rated 3	Total Rated	Pass Avg
1 Annika	14	5	10	6	35	1.23
2 Susan			1		1	2.00
3 Cathy	12	1	25	3	41	1.46
4 Candy	1				1	
5 Rebecca			3	1	4	2.25
6 Sally	5	2	33	13	53	2.02
7 Samantha	3		1	1	5	1.00
8 Petunia	8		20	5	33	1.67
11 Kaitlin	1	1	3		5	1.40
12 Abby	3	1	7	4	15	1.80
13 Lucky	7	4	9		20	1.10
MOVHS 03	54	14	112	33	213	1.58

Volleyball Ace Desktop

Forced versus Unforced Errors

This report shows which points were the result of actions by the coach team or the result of errors by the opponent. It shows when a match may have been won against a weaker opponent due to their errors as opposed to good play by the coach team.

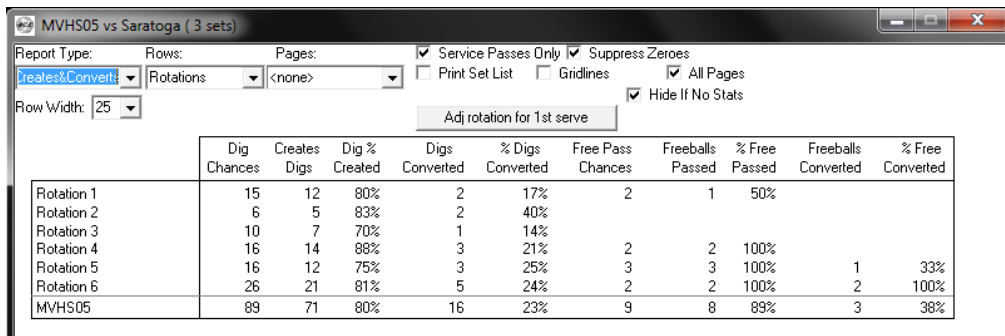


Report Type: Rows: Pages: ☒ Service Passes Only ☒ Suppress Zeroes
☒ Print Set List ☐ Gridlines ☒ All Pages
Row Width: 25 ☒ Hide If No Stats
Adj rotation for 1st serve

	Points Won	Forced	% Forced	Unforced	% Unforced	Points Lost	Forced Opp	% Opp Forced	Unforced Opp	% Opp Unf.
Rotation 1	12	8	67%	4	33%	19	8	42%	11	58%
Rotation 2	6	5	83%	1	17%	7	7	100%	0	0%
Rotation 3	6	3	50%	3	50%	4	1	25%	3	75%
Rotation 4	14	4	29%	10	71%	6	3	50%	3	50%
Rotation 5	14	7	50%	7	50%	8	5	62%	3	38%
Rotation 6	22	13	59%	9	41%	7	2	29%	5	71%
MVHS05	74	40	54%	34	46%	51	19	37%	32	63%

Creates and Converts - Digs and Freeballs

The Creates and Converts report shows how the coach team performed in situations where a scoring opportunity was created by a dig or by a freeball.



Report Type: Rows: Pages: ☒ Service Passes Only ☒ Suppress Zeroes
☒ Print Set List ☐ Gridlines ☒ All Pages
Row Width: 25 ☒ Hide If No Stats
Adj rotation for 1st serve

	Dig Chances	Creates Digs	Dig % Created	Digs Converted	% Digs Converted	Free Pass Chances	Freeballs Passed	% Freeballs Passed	Freeballs Converted	% Freeballs Converted
Rotation 1	15	12	80%	2	17%	2	1	50%		
Rotation 2	6	5	83%	2	40%					
Rotation 3	10	7	70%	1	14%					
Rotation 4	16	14	88%	3	21%	2	2	100%		
Rotation 5	16	12	75%	3	25%	3	3	100%	1	33%
Rotation 6	26	21	81%	5	24%	2	2	100%	2	100%
MVHS05	89	71	80%	16	23%	9	8	89%	3	38%

Match Scores

Match score reports show scores by set and tally sets won and lost and matches won and lost.

	Games	Game 1	Game 2	Game 3	Game 4	Game 5	Game Won	Game Lost	Match Won	Match Lost
Pinewood	3	25-19	25-12	25-8			3		1	
Brianham	5	7-25	20-25	25-21	25-19	17-15	3	2	1	
NotreDam	4	25-6	17-25	26-24	25-16		3	1	1	
Milpitas	4	21-25	22-25	25-16	15-25		1	3		1
MVHSD3	16						10	6	3	1

Per Set Averages

Select the **Per Set report type** to see per set average stats. Per set averages are totals divided by number of sets played (per player) and are ***not*** net of errors. For example, kills per set are calculated as total kills divided by number of sets played without subtracting attack errors.

	---Kills---	---Assists---	---Aces---	---Digs---	---Passes---	---Blocks---
1 Damm	0.70	6.31	0.62	2.29	0.02	0.07
3 Hope	1.47	0.06	0.37	1.58	2.00	0.01
5 Lawrence	2.38	0.11	0.58	2.50	4.17	0.29
6 Smith	1.45	0.10	0.19	1.49	1.48	0.12
7 Underwood	0.31		0.21	0.56	0.36	
8 Murray	0.79	0.06	0.49	2.31	1.86	0.01
10 Connor	0.69	0.38	0.15	0.69	1.02	0.04
11 Moon	1.00	0.08	0.03	0.65	0.86	
14 Lucky	1.39	0.48	0.55	2.52	3.37	
17 Kate	0.17	0.01	0.54	1.74	1.44	
43 Manning	1.22	0.05	0.38	1.14	1.85	0.05
PowerAces	8.56	7.11	3.11	13.41	13.61	0.45

Volleyball Ace Desktop

Total Attempts

	Attacks	Sets	Serves	Digs	Passes	Blocks
1 Damm	234	3209	527	376	3	16
3 Hope	629	71	298	245	308	2
5 Lawrence	730	115	390	306	496	64
6 Smith	541	73	117	205	194	46
7 Underwood	38	6	102	31	21	
8 Murray	372	77	373	298	243	2
10 Connor	125	68	99	47	66	2

Opponent Statistics

Click on the **Other Team** button to display statistics for the opposing team. Select **Winners**, **Errors** or **Total** (all outcomes) for the result type. Data is displayed by service rotation number.

Report Type:

Attempts (Opp)

Row Width: 25

☒ Suppress Zeroes

☐ Print Set List

☐ Gridlines

☒ All Pages

☒ Hide If No Stats

	RightAttack Attempts	MiddleAttack Attempts	LeftAttack Attempts	BackAttack Attempts	Freeball Attempts	Serve Attempts	Block Attempts
Rotation 1	4	7	11		1	19	1
Rotation 2	2	2	2			9	
Rotation 3	2	3	6			4	
Rotation 4	7	7	7	5	2	6	
Rotation 5	6	7	11		3	8	
Rotation 6	8	9	15	3	3	7	
Opponent Total	29	35	52	8	9	53	1

Chapter 3 Output Options

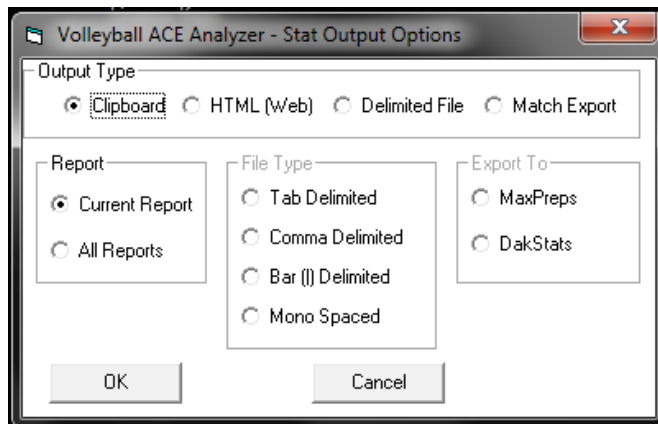
The Strategic Analyzer has a variety of output options which are selected from the command buttons at the bottom of the report screen.



Click on the **Print button** to output the current stat report to a printer.



Click on the **Output button** to output the current stat report to the clipboard or a data file. Select the type of output using the output type dialog:



Note that clipboard output can be pasted into spreadsheet, word processing and email documents, where it can be formatted, manipulated and/or emailed.

Delimited files can be opened by word processing or spreadsheet applications. The **HTML option** generates web pages. Typical web page output would look like this:

Volleyball Ace Stats for MVHS03 - Microsoft Internet Explorer - [Working Offline]

File Edit View Favorites Tools Help

Date: 11-4-03

MVHS03

	Total Games	Attack Kills	Attack Err	Attack TA	Attack Pot.	Set Asst	Service Ace	Service Err	Recep Err	Def Dig	Blocks BS	Blocks BA	Blocks BE	Gen BME
1 Annika..	85	6	20	56	-.250		7	6	43	128				3
2 Susan...	109	80	61	271	.070	4	11	18	5	33	27	17	7	2
3 Cathy...	91	111	60	334	.153	2	39	20	39	157	1	4		1
4 Candy...	105	189	128	511	.119	3	48	42	6	46	48	21	15	1
5 Rebecca.	55	49	25	141	.170	13	14	2	21	61		3		4
6 Sally...	105	190	104	476	.181	3	62	41	37	351	9	5	2	
7 Samantha	64	70	37	198	.167	13			6	23	5	5	2	2
8 Petunia.	102	10	23	65	-.200	2	6	21	45	176				1
11 Keitlin	67	1	6	15	-.333		14	9	30	46				
12 Abby...	110	199	72	574	.221	431	45	14	21	229	3	15		39
13 Lucky..	110	79	62	279	.061	408	95	48	17	237	2	8	2	67
MVHS03....	111	984	598	2920	.132	879	341	221	270	1487	95	78	28	120

The **Match Export option** exports stats for uploading into other systems such as MaxPreps and DakStats 3000. See Chapter 5 for details on stat export features.

Chapter 4 Custom Reports

In addition to the built-in reports, the Volleyball Ace Strategic Analyzer also has custom reporting. Using this feature you can create reports with the specific stats you want. Stats are selected from a series of drop-down menus and are shown as columns on the custom report.

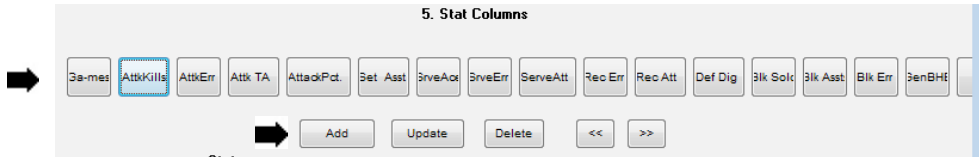
Custom reports can use built-in reports, then add or delete columns as desired. To create a custom report, click on the **Customize** button:



The initial custom report screen will include all columns which were on the screen when the **Customize** button was clicked. Enter a Title, a Row type and a Page type, then begin editing the columns.

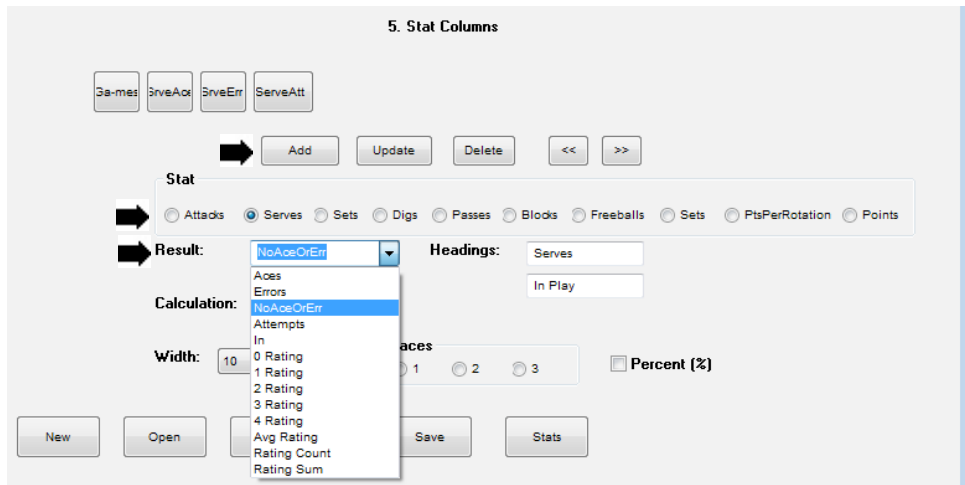
A screenshot of a software window titled "Volleyball Ace Custom Stat Report". The window has a title bar with standard Windows controls (minimize, maximize, close). Below the title bar, the main content area is divided into several sections. At the top, there's a section with four fields: "1. Initial Template:" (empty), "2. Title:" (containing "MVHS05 vs Saratoga"), "3. Rows:" (a dropdown menu showing "Players"), and "Width:" (a dropdown menu showing "18"). To the right of these is "4. Pages:" (a dropdown menu showing "<none>"). Below this is a section titled "5. Stat Columns" which contains a row of buttons for various statistics: "3a-mes", "AttkKills", "AttkErr", "Attk TA", "AttackPct.", "Set Asst", "ServeAcc", "ServeErr", "ServeAtt", "Rec Err", "Rec Att", "Def Dig", "Blk Solc", "Blk Asst", "Blk Err", and "3enBHT". At the bottom, there's a section labeled "Stat" with a row of radio buttons for selecting a stat type: "Attacks", "Serves", "Sets", "Digs", "Passes", "Blocks", "Freeballs", "Sets", "PtsPerRotation", and "Points".

For this example, we are going to build a service analysis. Start by deleting the non-serve columns. To delete a column, tap on that column then tap on the **Delete** button.



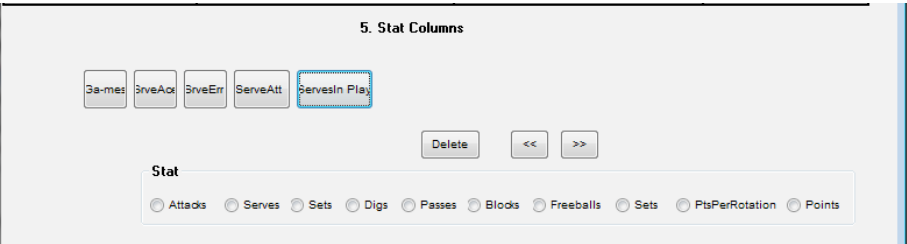
After deleting the unwanted columns, add additional columns. To add a column, tap on the type of stat (Serves) the result (NoAceNoErr) and the calculation (count).

New columns will have default headings which can be edited. Select the formatting you want using the **Width**, **Decimal Places** and **Percent** options. Then click on the **Add** button.



Volleyball Ace Desktop

To move a column (added columns are always added as the right-most column) click on that column then click on the << or >> **button**.



The resulting stat report looks like this:

Report Type: <Custom> Rows: Players Pages: <none>

Row Width: 18

	Srve Sets	Srve Ace	Srve Err	Serves In Play	Serve Att
1 Abby	3	1	1	9	11
2 Summer	3				
3 Chelsea	3	2		21	23
4 Jessica	1			1	1
5 Laura	1	1		3	4
6 Christie	1				
7 Monica	2		2	11	13
8 Lauren	1	1		1	2
9 Biz	3		1	3	4
10 Elizabeth	3			10	10
11 Ali	3				
12 Kelsey	2				
14 Hillary	3		3	1	4
MVHS05	3	5	7	60	72

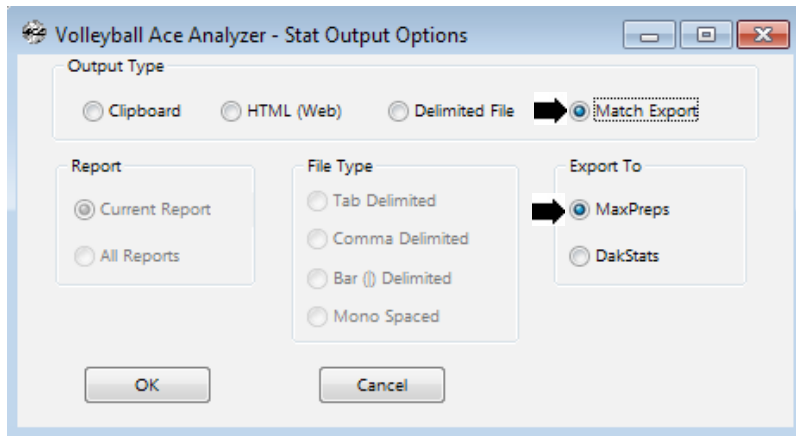
Click on the **Customize button** to return to the Custom screen to make any more changes to the custom report and to save it. Saved custom reports can be opened and reused.

Chapter 5

Stat Export Features

Volleyball Ace stats can be exported to other systems for league reporting and consolidation. Stat export is done using the Output features of the Strategic Analyzer. Stat export is currently implemented for use with MaxPreps and DakStats 3000.

To export data, click on the **Output** button on the stats reporting screen, then select the target for the export:

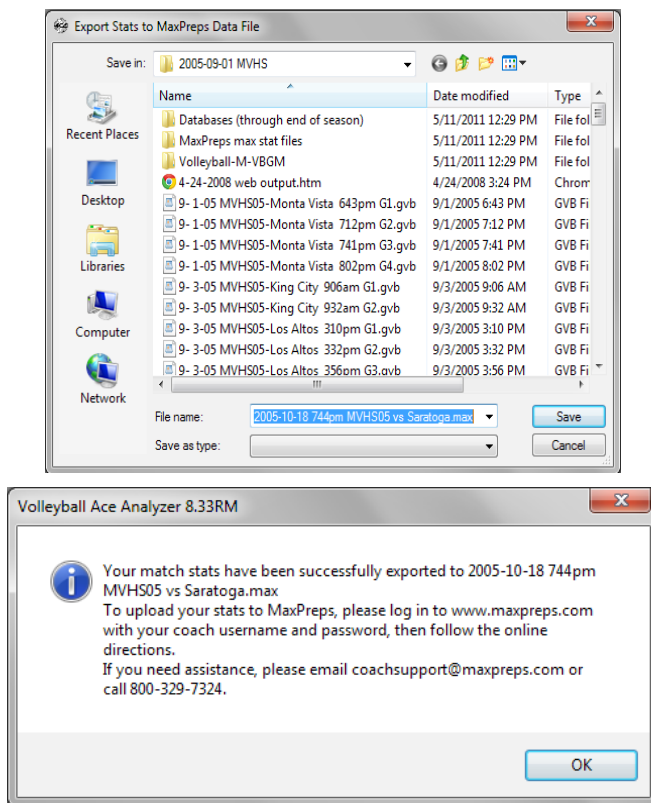


Volleyball Ace Desktop

Exporting Stats to MaxPreps

Click on the **MaxPreps export option**, then click on the **OK button**.

Choose the name and directory where the MaxPreps .max file is to be written, and it will be output:



Note that match data can also be exported to a .max file right on the iPad/iPhone or Android device. The output file can then be emailed as an attachment. Note that once the .max file has been created, you need to go to www.maxpreps.com, log on to your account and upload data.



Exporting Stats to DakStats 3000

Click on the **DakStats export option**, then click on the **OK button**.

Note that you must export data one match at a time (and select all of the sets in each match) for the process to work correctly.

The Volleyball Ace Desktop Analyzer will scan the currently selected sets of the match and display a dialog to be completed with additional match information. Complete any blank fields which are to be included in the exported match data, then click on the **Export button**.

Stat Export Utility

Volleyball Ace Stat Export Utility

Match ID: Date:

Location: Arena:


Start Time: End Time: Attendance:

Match Complete: ☒ League: ☐ Neutral site: ☐ Postseason: ☐

Visitor ID: Description: Record:

Home ID: Description: Record:

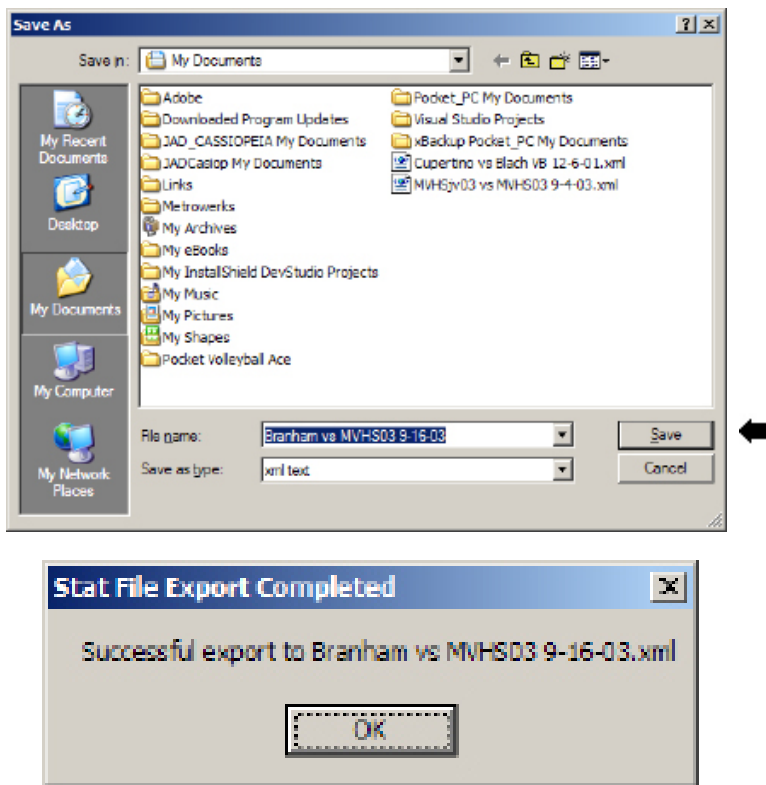
Referee 1: Referee 2:



Volleyball Ace Desktop

Note: It is a good idea to make a note of the folder where the export file is being written so it is easy to locate in the DakStats import step.

Confirm the name of the export file then click on the **Save button**.

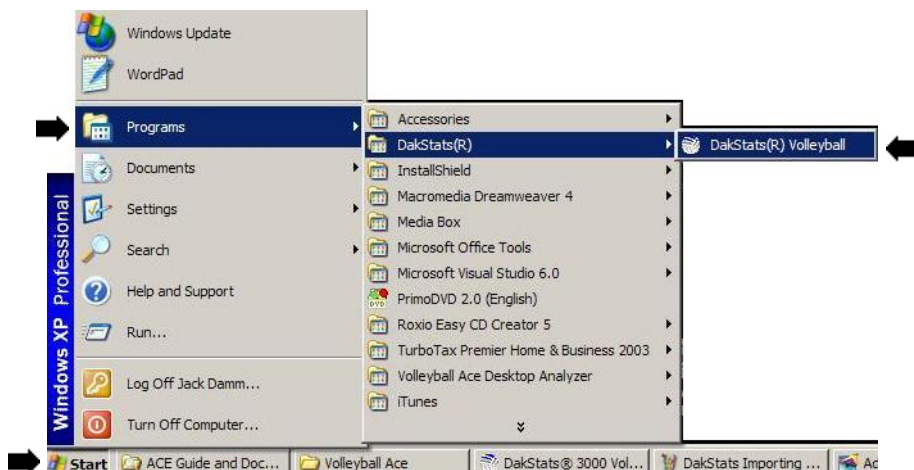


Click on the **Ok button**.

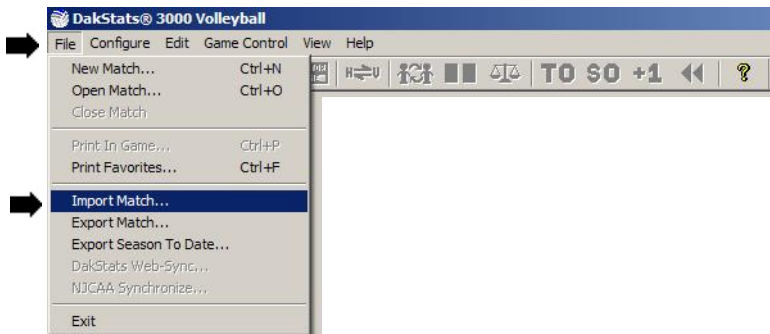
This is all you need to do to create the stat output file from the Analyzer. You can exit the Volleyball Ace Analyzer unless you want to export more data or review other stats.

When the match stats have been exported from Volleyball Ace, they can be loaded into DakStats 3000 using the **Import Match** option on the **File** menu.

Run DakStats 3000:

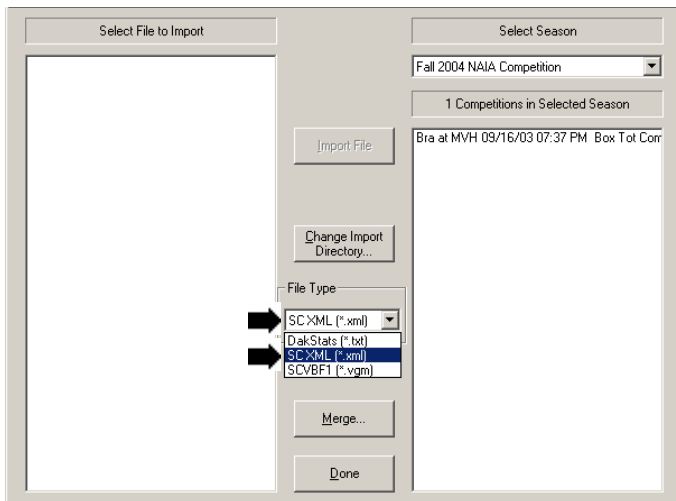


Select “Import Match” from the **File** menu:

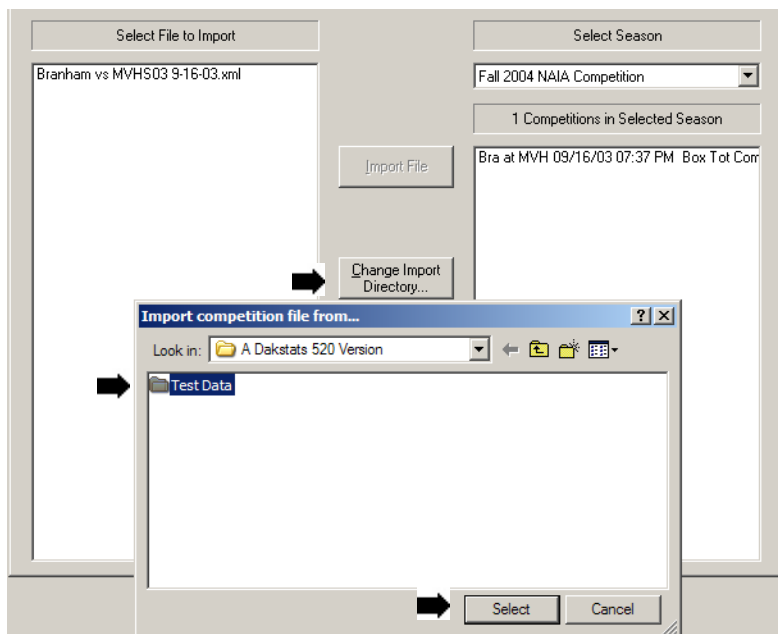


Set the File Type to import from “SC XML (*.xml)” type files:

Volleyball Ace Desktop

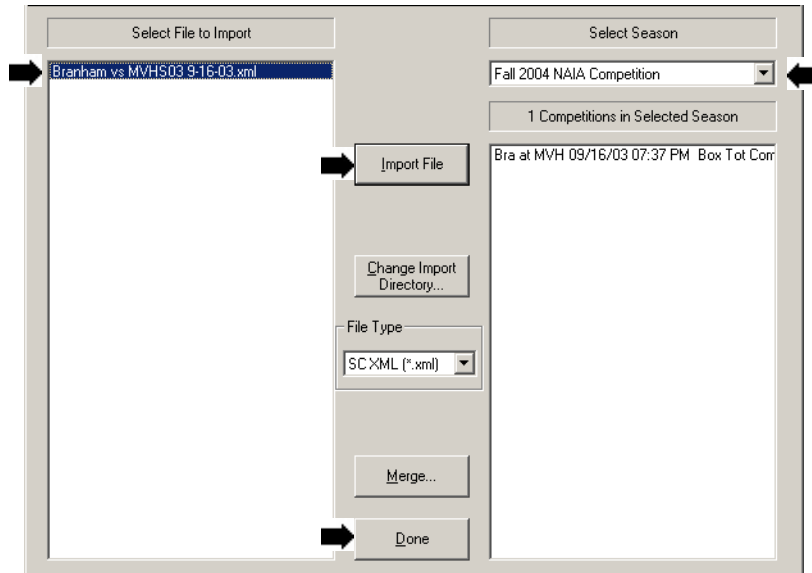


Click on the “Change Import Directory” button and select the directory (folder) where the Volleyball Ace match data was written:



Verify that you are importing data into the proper season. Use the drop-down list to select the correct season if necessary.

Select the match data file and click on the “Import File” button.



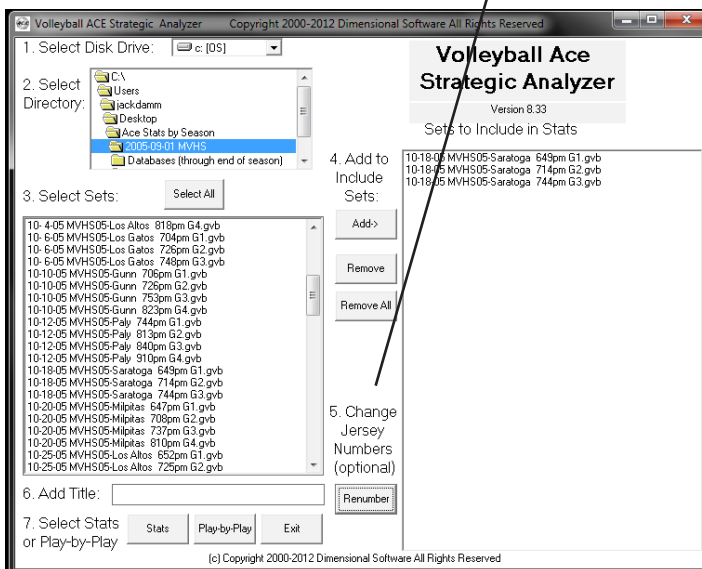
Click on the **Done** button when the import has completed. Your Volleyball Ace stats are now in DakStats and can be used to update conference data.

Chapter 6 Player Renumbering

“Coach I Lost My Jersey ...”

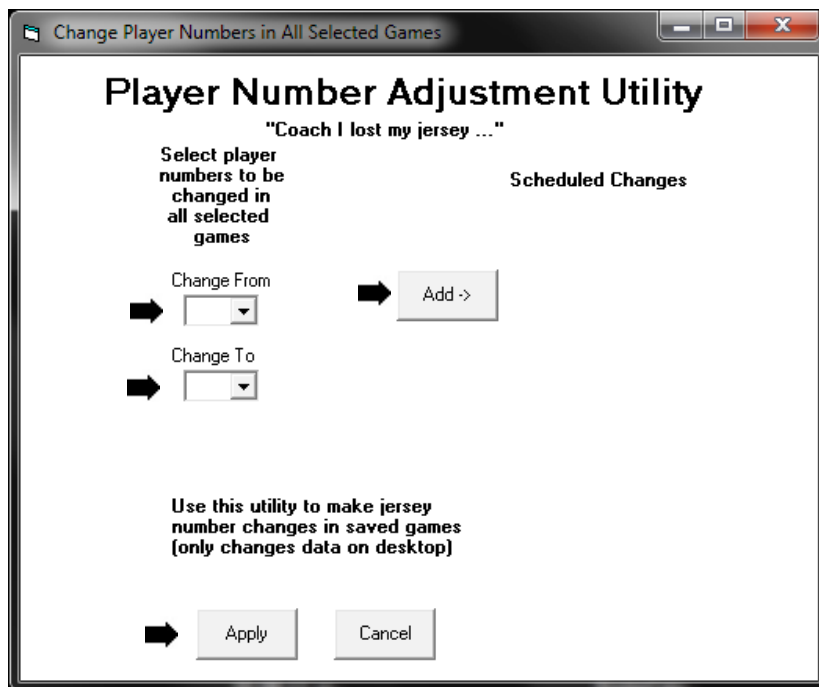
There are several reasons why player stats may be collected with different numbers for the same player during the course of a season. In order to report those stats in a consistent fashion, it is important to be able to renumber the players in selected sets.

The Volleyball Ace Desktop Analyzer includes a utility function which can be used to renumber players. Run the Analyzer, select the sets which are to be modified, and tap on the **Renumber** button (**5. Change Jersey Numbers-optional**)



On the Player Number Adjustment Utility screen, pick the **Change from** and **Change to numbers** from the drop-down lists and click on the **Add button**. Do this for all the numbers to be changed.

When the list of scheduled changes is complete, tap on the **Apply button** to have the changes made.



Note: Changes are made only to sets on the desktop, not on the handheld. Also note that the original set file is saved in the same directory on the desktop with a .bak extension.

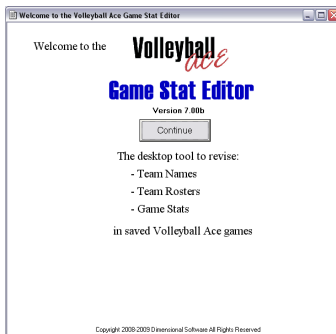
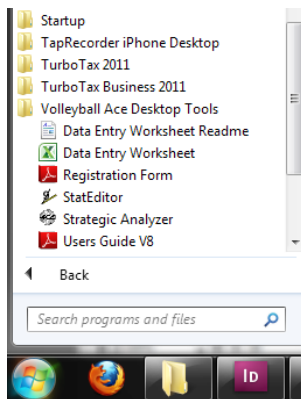
Also note: The StatEditor also includes a player renumbering feature.

Chapter 7

StatEditor

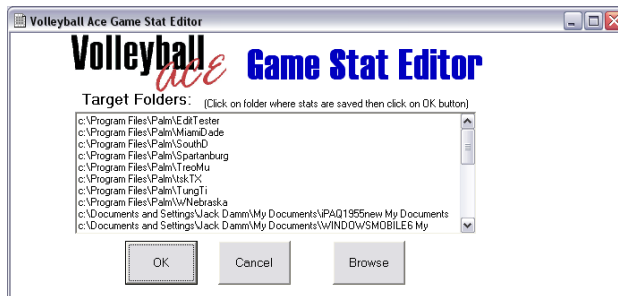
The StatEditor is a desktop utility which can be used to make changes to Volleyball Ace stat files.

To run it, click on the Start button, select All Programs, click on Volleyball Ace Strategic Analyzer Tools and then click on the StatEditor:

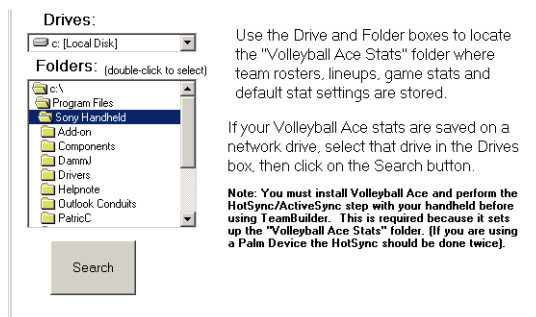


Click on Continue.

The StatEditor starts by searching for the folder on the desktop where Volleyball Ace stat files will normally be saved.



If you click on the **Browse button** or if no Ace Volleyball Stats folders were found, you can browse through the folders on your desktop computer to locate them:

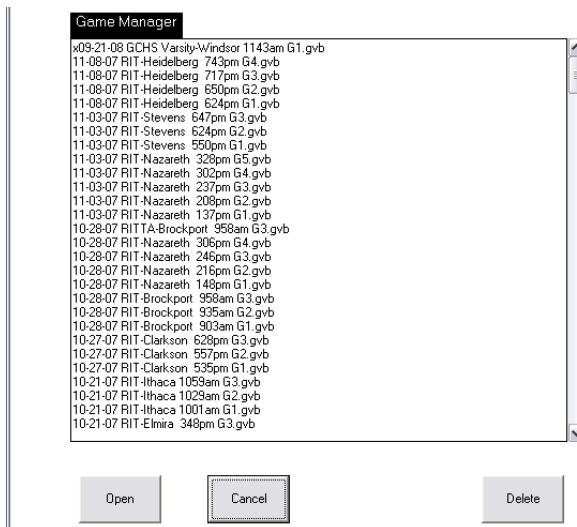


Important note: This version of the StatEditor requires that the Volleyball Ace stat files be located in a folder named, "ACE Volleyball Stats". If the stat files are not in that folder, then create a folder with that name and put the stat files into it. We plan to remove this restriction in future versions.

Volleyball Ace Desktop

Select a Set to Edit

Select the set to edit from the list of sets in the currently-selected folder:



Main StatEditor Screen

The **StatEditor** screen gives you access to all of the StatEditor features.

Change the match and set information directly on the main screen. To change rosters click on **Edit Roster** buttons. Click on **Change Jersey Numbers** button to renumber players for this game.

Click on the **Edit Rallies** and **Events** button to edit stats using the Rally-by-Rally editing screen. Click on **Adjust Score/Rotations** button to automatically recalculate the set score and correct rotations after changing rallies.

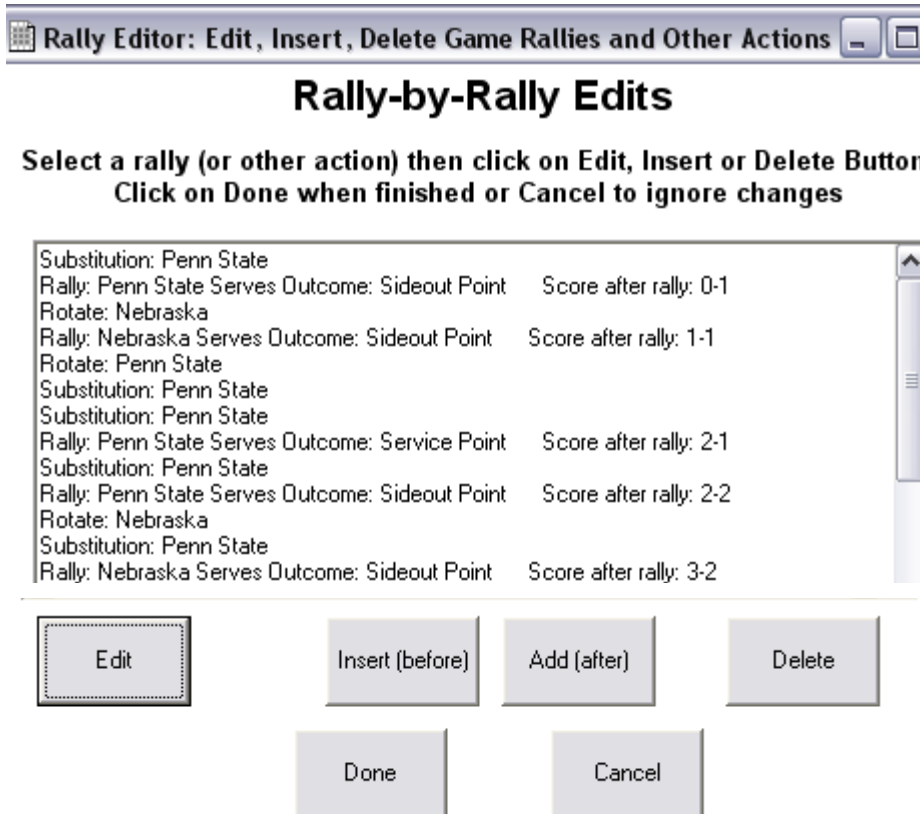
Match		Penn State vs Nebraska 12-18-08 10:38pm Game 1									
Event: NCAA Semi		At: Qwest		Date: 12-18-08							
Pool:		Court:		Match:		Time: 9:00pm					
Team: Penn State		Edit Coach Team Roster					Attend:				
Opponent: Nebraska		Edit Opponent Roster									
Ref1:		Ref2:		Scorer:							
Match	Games	1 of 1	2 of 3	3 of 5	Home	Away	Neutral				
League		Non-League		Postseason		Tournament		Other			
Game		1 2 3 4 5					Start time: 10:38pm		Endline		
							View:		Sideline		
<input checked="" type="checkbox"/> Use Libero		<input checked="" type="checkbox"/> Libero Can Serve		Max Substitutions: 12							
Points to Win: 25		<input checked="" type="checkbox"/> Rally Scoring		From: 1		To: 25		<input checked="" type="checkbox"/> Win by 2			
Coach Team		<input checked="" type="checkbox"/> First serve		<input checked="" type="checkbox"/> Near court		<input checked="" type="checkbox"/> Left score					
Rallies and Events						Other					
Edit Rallies and Events						Adjust Score/Rotation					
						Change Jersey Numbers					
Open		Save		Cancel		Exit					

Use the **Save button** to saved the edited set. If you want to discard the changes that have been made, click on the **Cancel button**. To edit another set, click on the **Open button**. Click on the **Exit button** when done.

Volleyball Ace Desktop

Edit Rallies

If you click on the **Edit Rallies and Events** button, the **Rally-by-Rally editing screen** is displayed. This gives you access to every rally, timeout, rotation, substitution and adjustment which was recorded for this set.



Click on a rally or other event, then click on the **Edit button**. To delete a rally or an event, click on the **Delete button**. Insert rallies and other events using the **Insert** and **Add buttons**. Click on **Done button** when finished.

Edit Rally

Rally Editor

Penn State Serve

☒ Penn State
Player:

☐ Nebraska

Serve Rating

☐ 0 ☐ 3
☐ 1 ☐ 4
☐ 2 ☒ NR

Result

☒ Still in Play
☐ This Team Wins
☐ Other Team Wins
☐ Replay

Next

Add (after)

Each screen in the Rally Editor sequence displays the touches or actions on one side of the net. Use the **Previous** and **Next** buttons to navigate through the rally.

Previous

Insert (before)

Nebraska Action

☒ Freeball or Error
☐ Block Attempt

-----Attacks-----

☐ Right ☐ Middle ☐ Back ☐ Left

Result

☒ Still in Play
☐ This Team Wins
☐ Other Team Wins
☐ Replay

Next

Add (after)

Volleyball Ace Desktop

Previous

Insert (before)

Penn State Touches

Blocker 1:
<none>

Dig/Pass:
11

Set:
<none>

Attack:
<none>

Blocker 2:
<none>

1st Touch

☐ Freeball

☒ Attack

☐ Dig/Pass

Pass Rating

☐ 0

☐ 3

☐ 1

☒ NR

☐ 2

☐ Triple Block

Result

☐ Still in Play

☒ This Team Wins

☐ Other Team Wins

☐ Replay

Add (after)

Done

Cancel

Click on the **Done button** when you are finished changing the current rally.

Note that if you change the outcome of a given rally it will affect the score of the set. When you have made all the changes you plan to make to the rallies in a set, then you should click on the **Adjust Scores button** on the main screen to recalculate the proper score.

Rallies and Events

Edit Rallies and Events

Adjust Score/Rotation

42

Edit Other Events

If you select an event other than a rally to be edited, then an appropriate edit screen will display. If you are adding a new event, then you must select the type of event being added.

Edit, Add Or Insert Game Events

Game Events

Team

☒ Penn State☐ Nebraska

Type of Event

☐ Rally☒ Substitution☐ Rotate☐ Timeout☐ Adjustment

Substitute

	Player in:	Player out:	Rotation position:
Sub #1	<input type="text" value="7"/>	<input type="text" value="4"/>	<input type="text" value="4"/>
Sub #2	<input type="text"/>	<input type="text"/>	<input type="text" value=" <none>"/>
Sub #3	<input type="text"/>	<input type="text"/>	<input type="text" value=" <none>"/>
Sub #4	<input type="text"/>	<input type="text"/>	<input type="text" value=" <none>"/>
Sub #5	<input type="text"/>	<input type="text"/>	<input type="text" value=" <none>"/>
Sub #6	<input type="text"/>	<input type="text"/>	<input type="text" value=" <none>"/>

Done

Cancel

Make the entry or changes you want on the appropriate event screen, then click on the **Done button**.

Volleyball Ace Desktop

Edit, Add Or Insert Game Events

Game Events

Team

☒ Penn State☐ Nebraska

Type of Event

☐ Rally☐ Substitution☐ Rotate☐ Timeout☒ Adjustment

Adjust

☐ Score +☐ Rotate☒ Substitutions +☐ Timeouts +

☐ Score -☐ Unrotate☐ Substitutions -☐ Timeouts -

Type of Event

☐ Rally☐ Substitution☐ Rotate☒ Timeout☐ Adjustment

Type of Event

☐ Rally☐ Substitution☒ Rotate☐ Timeout☐ Adjustment

Rotate (Player positions are after rotation)

Pos #412Pos #37Pos #21

Pos #511Pos #64Pos #16

Note that rotation records actually contain the lineup in the set at the time that the rotation occurs. (This is important if triple blocks have been recorded, as Volleyball Ace gives a block assist to each of the three players in the front row at the time of the block).

Player Number Adjustment Utility

There are several reasons why player stats may be collected with different numbers for the same player during the course of a season. In order to report those stats in a consistent fashion, it is important to be able to renumber the players in selected sets.

The StatEditor provides the capability to change player numbers so that stats can be reported for that player in a consistent fashion. This is similar to the renumbering features of the Volleyball Ace Strategic Analyzer, except that the StatEditor changes numbers for only one set at a time.

To use the Player Number Adjustment Utility, click on the **Change Jersey Numbers button** on the main screen:



On the **Player Number Adjustment Utility screen**, pick the **Change from** and **Change to** numbers from the drop-down lists and click on the **Add button**. Do this for all the numbers to be changed.

When the list of scheduled changes is complete, tap on the **Apply button** to have the changes made.

Volleyball Ace Desktop

Change Player Numbers in All Selected Sets

Player Number Adjustment Utility

Select player numbers to be changed in all selected sets

Change From: 22 ▼

Change To: 11 ▼

Add ->

Use this utility to make jersey number changes in saved sets (only changes data on desktop)

Scheduled Changes

Change 9 to 24 Remove

Apply
Cancel

Save Changes

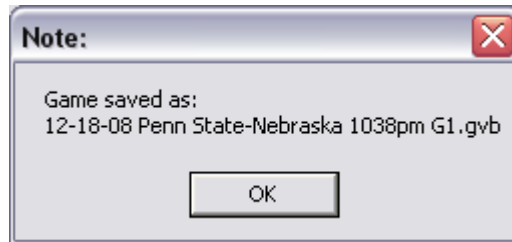
When all of the changes have been made to the currently-opened set using the StatEditor, click on the Save button:

Match										Penn State vs Nebraska 12-18-08 10:38pm Game 1									
Event: NCAA Semi				At: Qwest				Date: 12-18-08											
Pool:				Court:				Match:				Time: 9:00pm							
Team: Penn State				Edit Coach Team Roster				Attend:											
Opponent: Nebraska				Edit Opponent Roster															
Ref1:				Ref2:				Scorer:											
Match		Games		1 of 1		2 of 3		3 of 5		Home		Away		Neutral					
League			Non-League			Postseason			Tournament			Other							
Game																			
1		2		3		4		5		Start time: 10:38pm				Endline					
<input checked="" type="checkbox"/> Use Libero		<input checked="" type="checkbox"/> Libero Can Serve		Max Substitutions: 12		View:		Sideline											
Points to Win: 25		<input checked="" type="checkbox"/> Rally Scoring		From: 1		To: 25		<input checked="" type="checkbox"/> Win by 2											
Coach Team				<input checked="" type="checkbox"/> First serve		<input checked="" type="checkbox"/> Near court		<input checked="" type="checkbox"/> Left score											
Rallies and Events										Other									
Edit Rallies and Events					Adjust Score/Rotation					Change Jersey Numbers									
Open					Save					Cancel					Exit				

Volleyball Ace Desktop

The first time a set is modified and saved, the StatEditor makes a backup copy under the original name with an added extension of .bak.

When the edited set has been saved, the StatEditor confirms that it has been saved:



The set can now be used for stat reporting in the Volleyball Ace Strategic Analyzer.

Chapter 8

Data Entry Worksheet

There may be occasions when you want to put manually-recorded stats or adjustments into the Volleyball Ace set stat format so that the data can be combined with the rest of the sets started with Volleyball Ace.

The Volleyball Ace Data Entry Worksheet is an Excel spreadsheet that can be used to enter these stats and adjustments. Once stats have been entered into the worksheet, a built-in macro outputs the data to a file in the Volleyball Ace game format. Each set file created in this fashion can be accessed using the Volleyball Ace Strategic Analyzer so that complete season-to-date stats can be viewed together using the Analyzer.

To use the Data Entry Worksheet, run Excel and open the spreadsheet, “Volleyball Ace Stats Data Entry Worksheet.xls” You must enable macros. Enter values for the date, time, coach team name and opponent team name. These are important because they are used in creating the name of the saved stats file.

Next, enter player names, player numbers and the relevant stats. For adjustments, you can enter negative amounts.

When you have entered the data, tap on the “Save Stats” button. This will activate a “macro” which creates a Volleyball Ace stat file with this data. Note that the macro also renames and saves the current worksheet under a similar name. This macro does include a number of edits so that invalid entries should not cause problems. It is critical that the positions of cells where data is entered are not changed, since these are not flexible in this worksheet.

Volleyball Ace Desktop

Note that team set counts and set scores are not available with this version of the data entry worksheet. Also note that you can make entries in other cells in the worksheet and use references to put the figures into the cells where the worksheet macro expects them. (This can be useful if your worksheets are in a different order than this spreadsheet calls for them). Again, you must put the stats into the proper cells and you must not move these cells or insert rows or columns to cause them to be moved.

This spreadsheet generates Volleyball Ace set files with a .gvb extension that is the same format as sets transferred from Apple and Android devices. You should move them into the proper directory where your other set files are stored on your PC. Note that you can select that directory in the Save As dialog which the Excel macro calls.

	A	B	C	D	E	F	G	H	I	J	K	L	M	N	O
1	Volleyball Ace Stats Data Entry Worksheet (Version 4.20a)														
2															
3	Date:	10-07-02													
4	Time:	400pm													
5	Site:	Locale													
6															
7	Team:	Coach Team													
8	vs.														
9	Opp:	Opponent													
10															
11															
12															
13															
14	Player	No.	Ga- mes	Kills	Error (AttK										
15															
16															
17															
18															
37	Team Total			0	0	0									
38	Volleyball Stats Worksheet (Page 2)														
39	Player	No.	Asst	SA	SE	RE	Digs	BS	BA	BE	BHE	Srve	Set	Pass	Dig
40															
41															
42															

Make sure to tap on the **Save Stats button** which activates the macro to output the data. Note that the macro also saves a copy of the worksheet as an Excel file under the same name as the data file is created.

Index

Under
Construction

Index

% (stats) option, 22-24
<<<< (shift lineup) button, 33
>>>> (shift lineup) button, 33
<add player> in Roster list, 32, 34
4-2 Offense Type, 43
5-1 Offense Type, 23
6-2 Offense Type, 43

A

Ace Analyzer
 -See Volleyball ACE Analyzer
Ace Totals - See Total Match Stats
ActiveSync (Pocket PC), 63-64
Adding player to roster, 34
Adjustments
 (during game) 10, 13, 41
 (after game) 87-88
 player numbers, 80-81
Advanced Stats - see Automatic Stats
Ascending sort, 76
Assists
 how calculated, 39, 84
Attacks - see Offensive Statistics
Attendance, 19, 96
Attempts, 72, 83-84
Auto-Score (Selective Stats), 37
Automatic Stats
 27, 36-41, 51
 defined, 15
 overriding, 84
 recording, 37

Automatic Stats (cont'd)
 selection of, 30
Average per Game, 73
AVCA, stat definitions, 84
Away court, 28-29

B

Basic Stats - see Selective Stats

Beaming

 description, 61, 93-94
 game, 61, 93-94
 printer driver, 93-94
 roster, 29, 93
 to printer, 62, 93-94

Blocks

 block assist, 40-41
 block solo, 40
 record with double tap, 40
 see Defensive statistics
 triple block, 40-41

Both display (Player buttons), 33

Box score (desktop), 71

C

Calculating statistics, 83-84

Change,

 Game (adjust), 35, 42
 Match (adjust), 42
 Jersey numbers, 80-81

Charting (SnapCharts),
 attacks, 52
 reports, 54-55
 serves, 53
 setting up, 27

Clear lineup button, 33

Clear roster button, 34

Coach team, 10, 13

Consolidate games

 Analyzer (desktop), 24, 63

 MatchStats (handheld), 24, 59

Count option, 22-23, 70

Custom reports, 70, 78-79

D

DakStats, export to, 95-100

Data entry worksheet, 87

Defensive stats

 23, 70-75

 calculating, 83-84

Deleting games, 49-50, 82, 89-92

Descending sort, 76

Desktop Analyzer,

 24, 63-82

Desktop TeamBuilder,

 7, 25, 29, 34

 (also see separate documentation)

Digs - see Defensive statistics

Drop-down menu, 11, 19, 26

E

Edit Roster, 26, 32, 34, 44

Efficiency option, 22-24, 70, 84

Elapsed time of match, 19, 96

Endline view

 8, 10, 30

 setting with adjust, 40

Erasing games - See Deleting games

Errors (opponent), 24, 76

Exit menu item, 19

Export stats, 77, 95-100

F

File menu, 19, 26

First Serve checkbox, 30

G

Game changes (adjust), 41

Game Manager screen, 12, 25

Game number selection, 30

Games played (desktop), 70-71

Game setup,

 26, 30, 32

 see TeamBuilder

Games,

 to play selection, 28

 to win selection, 28-29

Graffiti area (data entry),

 28, 30, 34

H

Handspring computers, 7

Highlight setter, 49

Home court, 28-29

HotSync handheld to PC, 7, 63-64

HTML (Web) output files, 70, 77

I

Individual player stats, 73

Invalid subs, 45

Infrared beaming - see Beaming

IR - see Beaming

J

Volleyball Ace Desktop

Jersey numbers (player),
correcting, 80

K

Kills - see Offensive Statistics

L

League, 28-29
Left Court (Team Side), 30, 41
Left Score (Score Side), 31
Libero player
 18
 selection, 30-31
 serve, 30, 45
 substitutions, 43, 45
Lineup button, 30, 32, 35
Lineup screen, 26, 31-32, 34
Locating games,
 Macintosh, 68
 Windows PC, 67
Log of rally, 21
Lookup (roster) button, 28-29, 34

M

Macintosh desktop,
 63
 Folders, 68
 HotSync, 65
 Locating games, 68
 Running Analyzer, 66
 Uploading to, 65
Main screen, 8, 13
Managing saved games, 82

Match & Game (adjust), 42
Match setup
 26, 28-29
 see TeamBuilder
Match Stats (consolidation), 59-62
Maxpreps.com, export to, 95
Menu button, 11, 26

N

Name display (player buttons), 33
Near Court (Team Side), 30
Net, 8, 10, 13
New,
 Game, 19, 26, 35
 Match, 19, 25-26
 Season, 89-92
Next Game, 19
Num display (player buttons), 33
Numbers (player),
 correcting, 80-81

O

Offense Type, setting, 43
Offensive stats
 9, 22, 70-73
 calculating, 84
 first-hit attacks, 84
 freeballs, 84
 second-hit attacks, 84
Open saved game, 12
Opp Lineup button, 35
Opponent buttons, 15
Opponent stats, 9, 24, 76
Opponent team, defined, 10
Output options (desktop), 77

P

Palm OS, 6,7
 Palm computers, 7
 Passes
 23, 70-75
 rating, 27, 74
 Percent option, 22-23, 70
 Player
 buttons, 13, 15, 18
 numbers, 10, 80-81
 positions, 33-34, 43-44
 Pocket PC, 6-8,11-12,25-26,59,64
 Point button, 15-16, 36-37
 Points per rotation, 72
 Points to Win, setting, 30
 Position (Pos) display
 (on buttons), 33, 44
 Player stats, 73
 Printing
 on desktop, 77
 on IR printer, 62, 93-94

Q

Quick subs, 18, 46
 Quick pick roster, 34

R

Rally, recording a, 37-41
 Rally Scoring
 35
 from-to range, 30
 setting, 30
 Ranking players - see Sort On
 Rating
 Automatic, 56
 Passes, 56-57
 Rating (cont'd)
 passes, 56-58

reports, 58
 serves, 56
 setup, 27
 Recording a Rally, 37-41
 Reminders (subs), 46
 Removing games - see Deleting games
 Renumbering players, 80
 Replay button, 15-16, 36-37
 Reversed calls
 - see Undo button
 - also see Replay button
 Review Setup button, 35
 Roster
 18
 creating & editing, 34
 lookup/open saved, 29, 32
 quick pick setup, 34
 TeamBuilder, 29
 also see TeamBuilder document
 Rotation
 adjusting, 41
 errors, 8
 Running
 Desktop Analyzer, 63-64
 Match Stats, 59
 Volleyball ACE, 25

S

Save
 Game, 19
 Lineup, 33
 opening saved game, 12
 Saved rosters, 28-29, 34
 Score
 8, 10, 36
 adjusting, 41
 Score (cont'd)
 effect of Undo, 42

Volleyball Ace Desktop

- game and match, 75
- sheets, 9-10, 21
- side, adjusting, 41
- Scoring button, 10, 13, 21
- Season stats
 - see Consolidate games
 - archiving, 89-92
 - resetting, 89-92
- Selecting games to consolidate,
 - Match Stats, 59-62
 - Desktop Analyzer, 69
- Selective Stats
 - 27, 36-37
 - defined, 16
 - recording, 36
 - selection of, 30
- Serial number, 20, 25
- Serve
 - 23, 70-75
 - button, 10, 14, 36-37, 39
 - rating, 27, 74
 - side, adjusting, 41
- Set, 38-39, 83-84
- Setter, highlighting, 49
- Shift (lineup) buttons, 33
- Show all players, 18
- Show bench only, 18
- Sideline view
 - 8, 10, 30
 - setting with adjust, 41
- Sideout button, 15-16, 36-37
- Silk screen buttons, 19
- Sort On options, 76
- SnapChart - see Charting
- Sony Clié handheld computers, 7
- Spike (Kill) - see Offensive Stats
- Start Game button, 35
- Start Menu (Pocket PC), 12
- Stats

- calculations, 83-84
- choosing Automatic, 27
- choosing Selective, 27
- definitions
- desktop, 70-76
- handheld, 9, 22-24, 59-62
- Stats button, 10, 13, 21-22
- Substitutions
 - 10, 14, 18
 - count, adjusting, 41
 - quick, 18, 46
 - reminders, 46
 - on score sheet 9, 21
 - maximum, 30
- Switch to Offensive Positions, 48

T

- Team Side, adjusting, 41
- TeamBuilder,
 - 7, 25, 29, 34
 - also see TeamBuilder document
- Timeouts
 - 17
 - buttons, 10, 14, 17
 - count, adjusting, 41
 - maximum, 30
 - on score sheet, 9
- Tool - See Blocks
- Total attempts (opponent), 24
- Total attempts - see Attempts
- Total Match Stats, 59-62
- Transferring files to desktop
 - 63-64
- Transition offense -
 - see Switch
- Treo, Palm, compatibility, 85
- Triple block, 40-41

Tungsten, Palm, compatibility, 85

U

Undo button, 14, 42

V

Version number, 20, 25

Volleyball ACE Analyzer
63-82

reports, 70-82

Volleyball ACE, 7, 11

W

Web-ready HTML, 70, 77

Win by 2 checkbox, 30

Windows PC,
directories, 67
HotSync, 64
locating games, 67
uploading to, 64

Winners option, 24, 76

Y

Year-end archive, 89-92

Z

Zero attacks (kill attempts)

38, 83-84

Zire, Palm, compatibility, 85

DIMENSIONAL

S O F T W A R E

home
court
of the

Volleyball
ace

Index

Under Construction

DIMENSIONAL
S O F T W A R E

home
court
of the

Volleyball
we

and
the

 **TapRecorder**
with PracticeStats